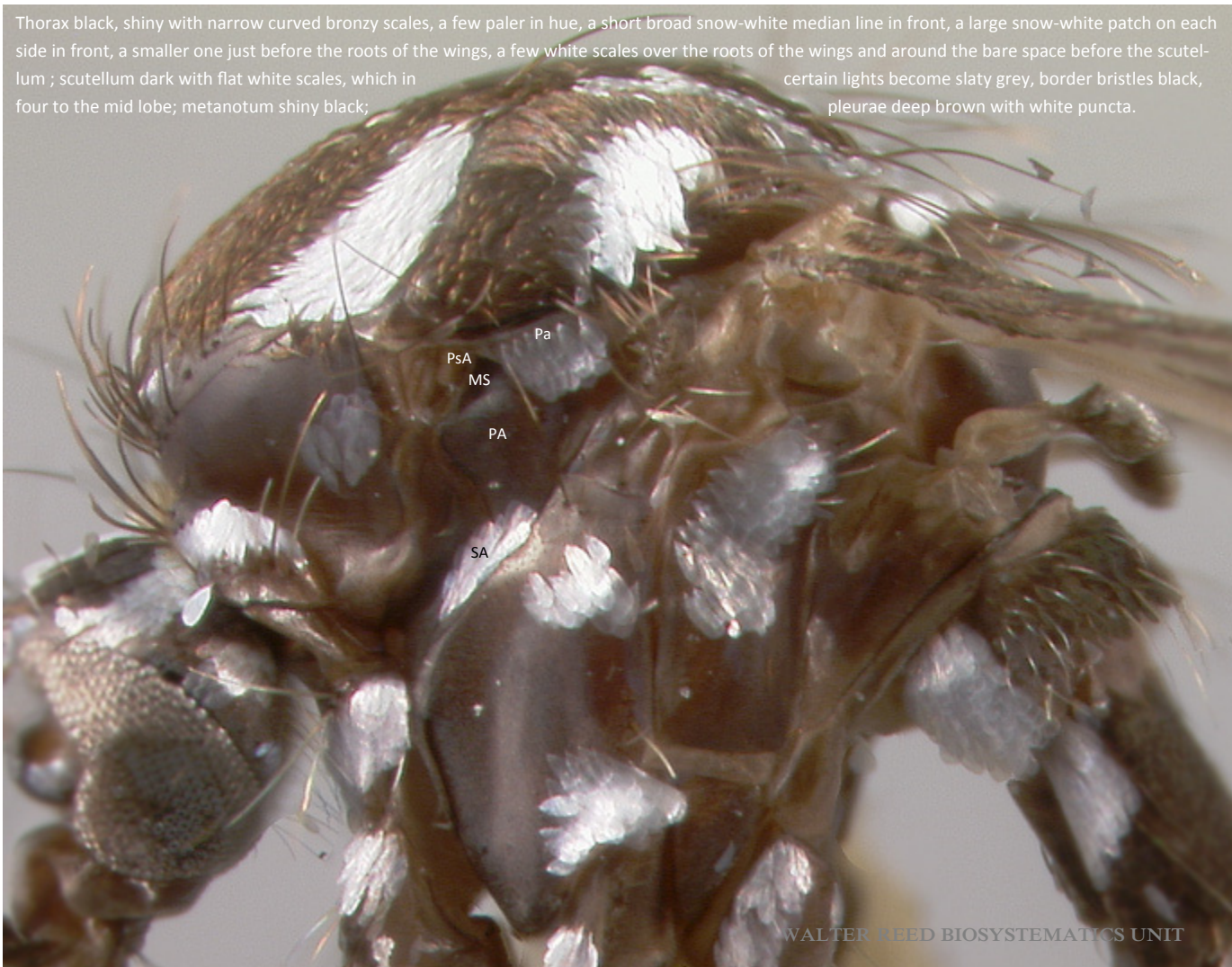
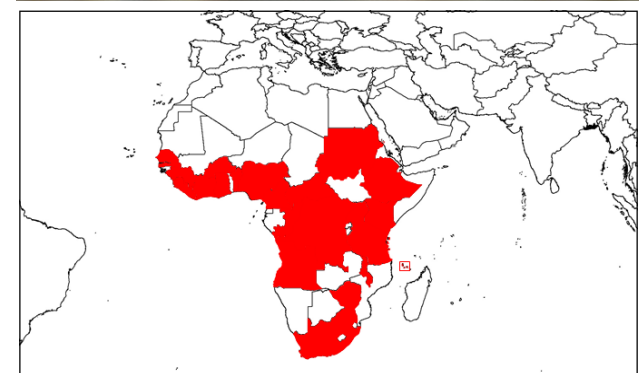
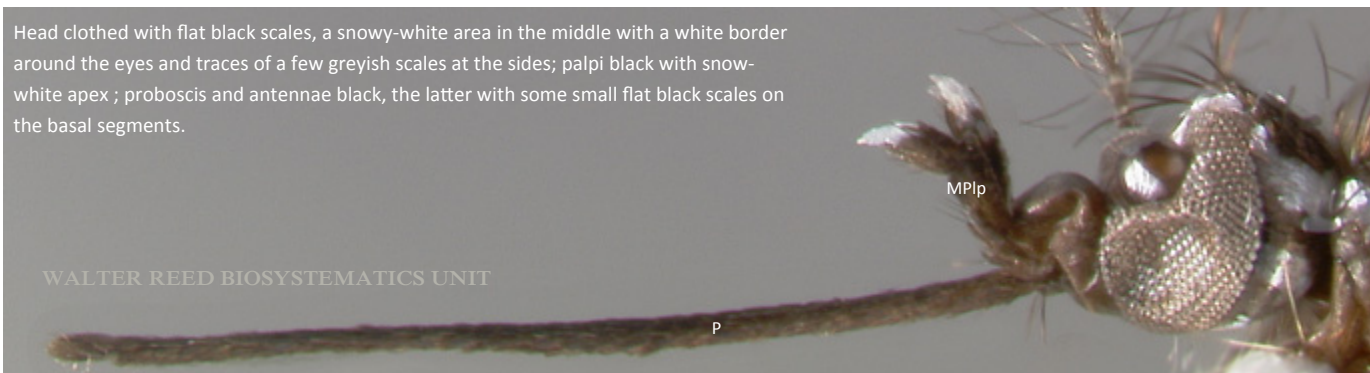


Aedes (Stegomyia) bromeliae (Theobald), WRBU specimen AEBro, Character descriptions: Culicidae, 1911: 10

Thorax black, shiny with narrow curved bronzy scales, a few paler in hue, a short broad snow-white median line in front, a large snow-white patch on each side in front, a smaller one just before the roots of the wings, a few white scales over the roots of the wings and around the bare space before the scutellum ; scutellum dark with flat white scales, which in certain lights become slaty grey, border bristles black, pleurae deep brown with white puncta.



Head clothed with flat black scales, a snowy-white area in the middle with a white border around the eyes and traces of a few greyish scales at the sides; palpi black with snow-white apex ; proboscis and antennae black, the latter with some small flat black scales on the basal segments.





Aedes (Stegomyia) bromeliae (Theobald), WRBU specimen AEbro, Character descriptions: Culicidae, 1911: 10



Wings with dense brown scales

WALTER REED BIOSYSTEMATICS UNIT

Male head.

No Photo Available



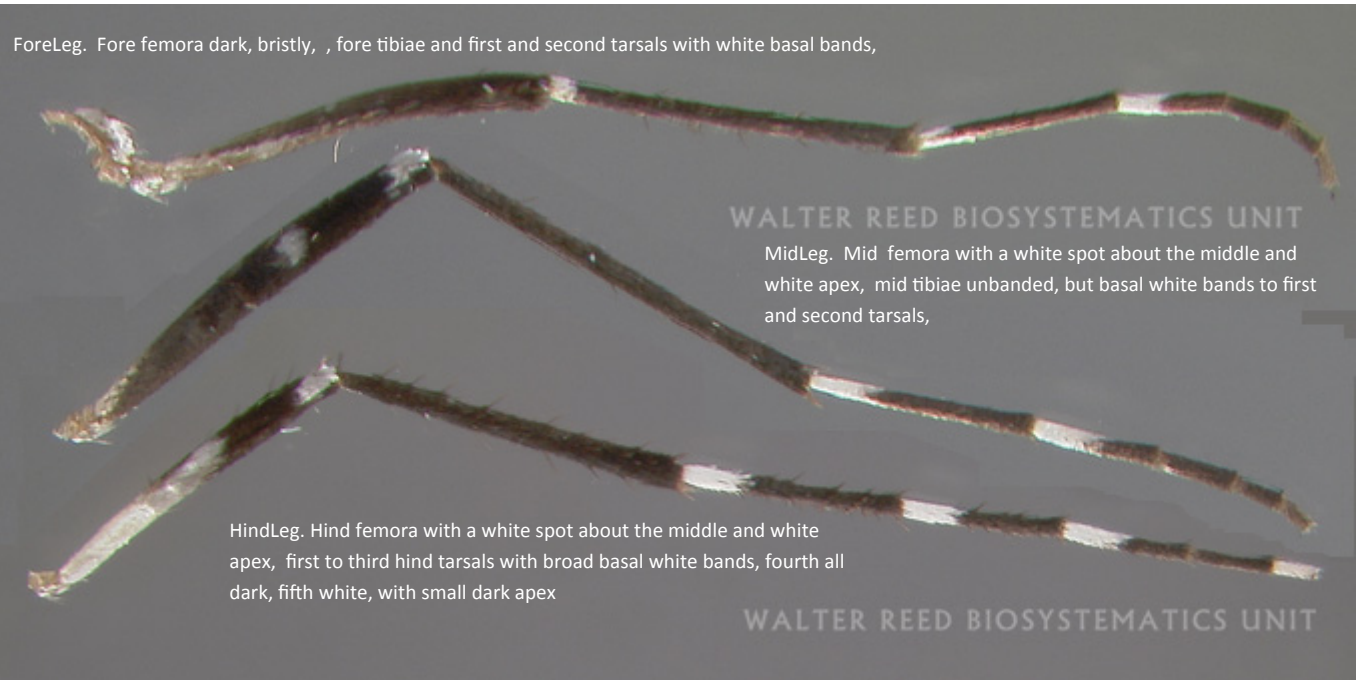
Abdomen black, first and second segments unbanded, third to sixth with snow-white basal bands, seventh unbanded, eighth with two basal white spots, all the segments with basal lateral white spots, border-bridles dark brown.



WALTER REED BIOSYSTEMATICS UNIT

Bionomics: Larvae are found in tree holes, leaf axils of pineapple, Colocasia, banana, taro, palm spathes and artificial containers. Females readily bite man (Huang, 1986).

Medical Importance: Vector of yellow fever in Africa (Huang, 1986).



ForeLeg. Fore femora dark, bristly, fore tibiae and first and second tarsals with white basal bands,

WALTER REED BIOSYSTEMATICS UNIT

MidLeg. Mid femora with a white spot about the middle and white apex, mid tibiae unbanded, but basal white bands to first and second tarsals,

HindLeg. Hind femora with a white spot about the middle and white apex, first to third hind tarsals with broad basal white bands, fourth all dark, fifth white, with small dark apex

WALTER REED BIOSYSTEMATICS UNIT