

Culex (Culex) simpsoni Theobald, WRBU specimen CXssi, Character descriptions: Edwards, 1941:309

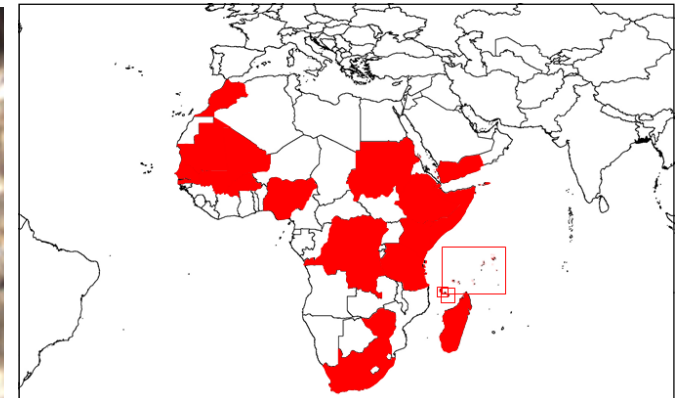
Thorax. Integument brown. Pleura with patches of broad white spatulate scales as follows: patch ventral and mesal to upper proepisternal setae, patch on postspiracular area near spiracle, small patch below prealar knob, larger patches on upper corner and lower posterior border of mesokatepisternum, anterior patch on mesepimeron about same level and size as upper mesokatepisternal patch, and small patch before upper mesepimeral setae. Pleural setae golden brown, numbers follow: 4-6 upper proepisternal, 6-10 prealar, 4-6 upper mesokatepisternal, 4-7 lower mesokatepisternal, 3-5 upper mesepimeral, and 1 lower mesepimeral (MeSL).



Thorax. Posterior margin of scutellum (Stm) trilobed, Scutum (Scu) with yellowish and golden-brown falcate scales, often forming pattern consisting of median stripe on anterior 0.5, Scutellum with white to very pale yellow falcate scales mainly on median lobe, scales larger on median lobe and projecting laterad on either side of midline. Ante- and postpronota with some golden-yellow falcate scales, longer on anteppronotum.



Head. Proboscis, maxillary palpus largely clothed in dark brown scales. Proboscis with pale scaling in middle of ventral surface, sometimes forming more or less complete ring; Maxillary palpus with some pale scales dorsomesally at apex; Falcate scales of vertex coarse, yellowish white; forked scales long, yellowish medially, dark laterally; ocular scales elongate, white, continuous with elongate white spatulate scales of postgenal area.



Culex (Culex) simpsoni Theobald, WRBU specimen CXssi, Character descriptions: Edwards, 1941:309



Wing. Entirely dark-scaled. Resemble *univittatus* and *perexiguus* in most respects but they lack a spot of pale scales at the base of the costa (C).



Male head. Maxillary palpi as long as Proboscis. Antennae feather like.

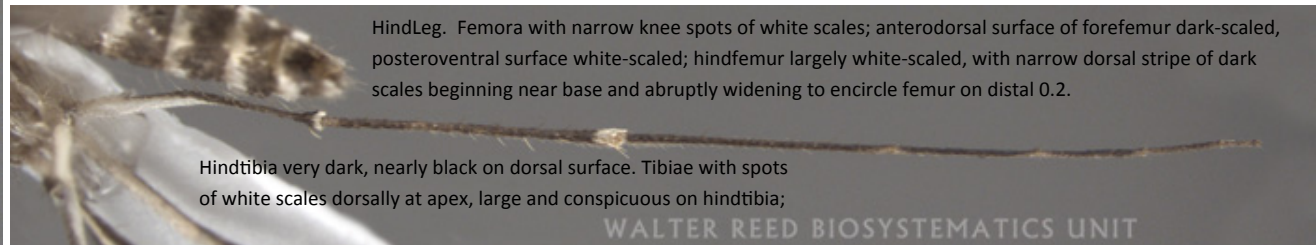


Abdomen Abdomen: Tergum I with large median patch of brown scales; terga II-VII with distinct, slightly convex, tergum VIII normally entirely white-scaled.

Abdomen white basal bands that are narrowly joined to basolateral spots of same color

Bionomics: *Culex simpsoni* is found in a wide variety of habitats, but its original breeding places were probably sunlit pools of slow or stagnant water along streams or streambeds. Besides these habitats, *simpsoni* is commonly found in lakes, ponds, marshes, puddles, furrows, seepage pools, and artificial pools such as tubs, wells, troughs, and tanks. Ribeiro and Mexia (1966) collected larvae in relatively saline marshes and ground pools with somewhat turbid water and muddy bottom in Angola. Larvae have been found in association with *Anopheles (Celia) cinereus* Theobald, *An. (Gel.) pharoensis* Theobald, *An. (Gel.) sergentii* (Theobald), *Culex fheileri*, and *Cx. (Maillotia) arbieeni* Salem (as *jenkinsi* Knight) in southwestern Asia (Knight, 1953a), with *An. (Gel.) arabiensis* Patton (as *gambiae* Giles) in Uganda (Harris, 1942) and with *Culex antennatus*, *Cx. species near infula* Theobald (as *bitaeniorhynchus* Giles), and *Cx. (Culex) thalassius* Theobald in Angola (Ribeiro and Mexia, 1966).

Medical Importance: Nothing is known about the vector potential of this species, but it is not likely to be of importance in disease transmission because it only rarely bites man (Mattingly and Brown, 1955).



HindLeg. Femora with narrow knee spots of white scales; anterodorsal surface of forefemur dark-scaled, posteroventral surface white-scaled; hindfemur largely white-scaled, with narrow dorsal stripe of dark scales beginning near base and abruptly widening to encircle femur on distal 0.2.

Hindtibia very dark, nearly black on dorsal surface. Tibiae with spots of white scales dorsally at apex, large and conspicuous on hindtibia;



Hindtarsus. Tarsi entirely dark-scaled.